

LF 125 KHz Handheld RFID Writer

Introduction:

The 125KHz handheld duplicator is a device used to produce the the same card number as the mother card. It uses a mini handheld shell, which is ergonomic and easy to carry.



Features:

There are only "READ" and "WRITE" two buttons, that's easy for operation.

Power: 2 * 1.5 V AAA batteries (No battery inside the device, you have to prepare 2 batteries by your side).

Remarks:

One beep stands for working on the EMID ard.

Twice beep stands for working on the HID , AWID card.



The device is ergonomically designed to fit the shape of the hand, making it easy to grip and use.



Push the back cover of the device upwards and install two new 1.5V alkaline batteries.

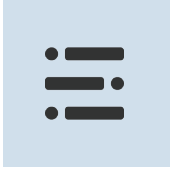


Note: When the device is not in use, be sure to push the right switch down to turn off the power of the device.

Please use two new 1.5 V alkaline batteries. Used 1.5 V batteries may cause the machine to not work.

Use 1.2 V batteries and the machine will not work.

Keep the device operating DC voltage between 2.5 and 3.1 V.



Size : 71*117*31 mm
Frequency : 125KHz



geeot.com/b01



Ambient Operating
Temperature
32 - 158 °F



Two New 1.5V
Alkaline Batteries



Supply Voltage
2.5 -3.1V



Active Current
25 - 35 mA



Use Distance
10 -30 mm



Relative Humidity
5 - 95 %

STEP 1

Remove the batteries cover and install **2 * 1.5 V AAA** batteries (Note: The device operating DC voltage must be between 2.5 and 3.1V).



Cannot back up cards with encrypted data.

STEP 2

Push the switch on the right side of the device to turn on the device. The red light is on, the green and yellow lights flash briefly, and the device emits two beeps. If the light does not light up, rein stall the battery and start the device until it works.



The card backup is not a percentage success. If the read or write fails, you can try to replace the battery (**two new 1.5V batteries**), adjust the position of the card reader, and contact us. We will help you and assist you in solving the problem.

STEP 3

Place the sensing area on the left side of the device close to the original card, press the "READ" button, the green light will light up after the yellow light flashes, and a beep will sound, indicating that the card reading is successful. One beep indicates an EMID card, Two beeps indicate an AWID card. If the device cannot read by pressing the "READ" button, press the "WRITE" button and hear a few beeps, then the card reading is wrong.

STEP 4

After the card is read successfully, replace the original card with a writable EMID card or AWID card, press the "WRITE" button, the yellow light flashes to indicate that the card is being written, then the yellow light goes out, the green light comes on, and one or two prompt sounds are issued, indicating that the card is written successfully.

Multi-type reading	AWID,EM4100,EM4200,TK4100, TK4168,TK4100-D, HID(H10301, H10302,H10304,H10306)
Multi-type writing	T5577, SIC7888, CET5200, CET5577, EN4205, EN4305, EL8265, EL8268



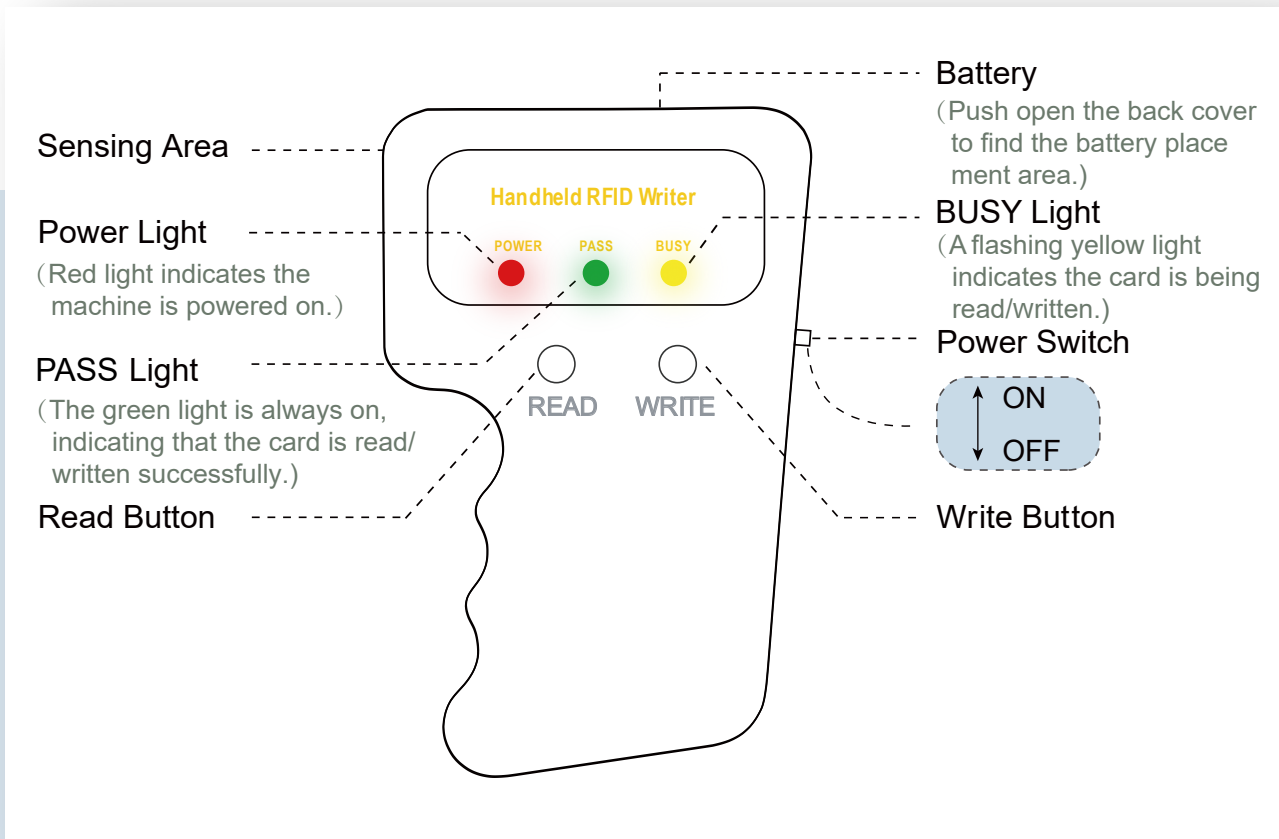
EMID



HID



AWID



NOTICE: The Copier is intended as a tool to facilitate the storage of multiple Radio Frequency Identification (RFID) keys for later recall and use. We do not guarantee that the user of the product will experience any higher level of security. The user of this product uses it at his or her own risk. Therefore, the user of this product forever releases Network Security Technology Co., Ltd., its shareholders, successors and assigns, agents, attorneys and representatives from any and all claims, demands, debts, liabilities, actions, causes of action, proceedings, contract disputes, obligations and judgments, whether at law or in equity, arising out of or related to the use and operation of the RFID Copier.